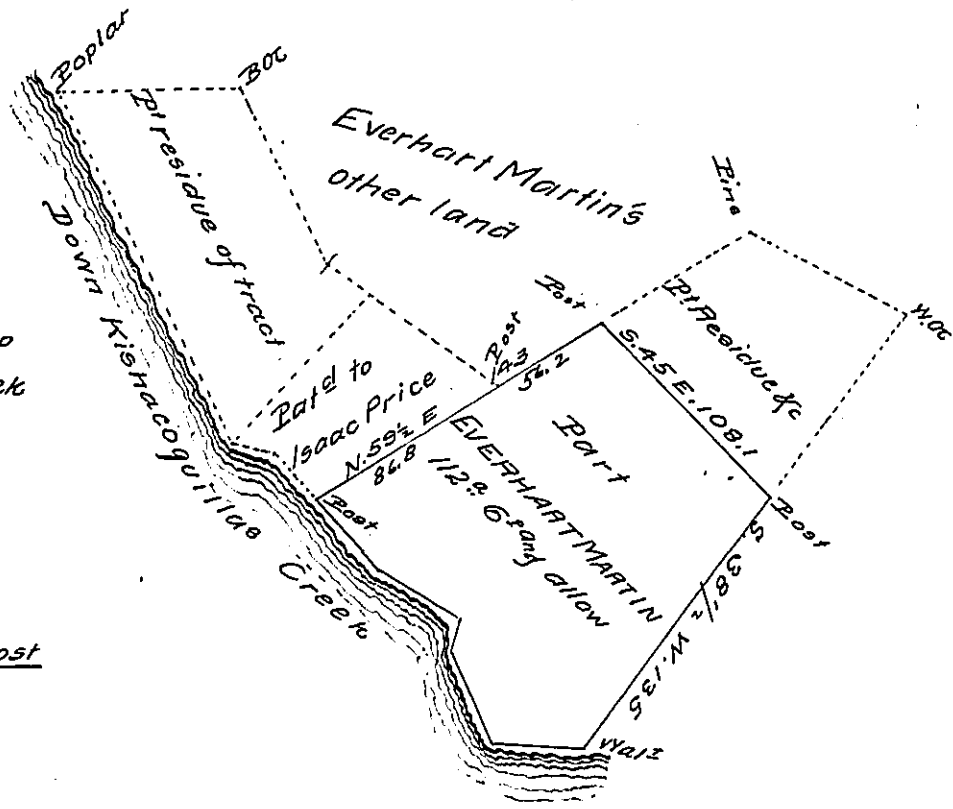


Courses & distances up
Kishacoquilla's Creek

Walz	N 8 1/2	W 39.9
	N 22 1/2	W 45
	N 16	E 14
	N 59 1/2	W 40
	N 45	W 40 Post



Draft of a Tract of land situated in Derry Township in the County of Mifflin
Containing One hundred and twelve acres, six perches and allowance of six
per Cent for roads &c. Surveyed for A.H. Lee Supt L. I. and S. Co. the 6th day of
Dec^r 1873, being a part of a larger tract of Two hundred, sixty five and five
tenths acres and allowance; originally surveyed in pursuance of a Warrant
granted to Everhart Martin dated the 2nd day of April A.D. 1755

John Swartzell C.S.

To Robert B. Beath Esq
Surveyor General of Penn^a

IN TESTIMONY that the above is a copy of the original remaining on file in
the Department of Internal Affairs of Pennsylvania, made
conformably to an Act of Assembly approved the 16th day of
February 1833, I have hereunto set my hand and caused
the Seal of said Department to be affixed at Harrisburg,
this eighteenth day of December 1907

Henry Howard
Secretary of Internal Affairs.